



【訂正冊子】

転がり軸受総合カタログ
(CAT.NO.B2001-8)

複列円すいころ軸受
疲労限荷重値

TDOタイプ
(B268～B282)

TDIタイプ
(B284～B288)

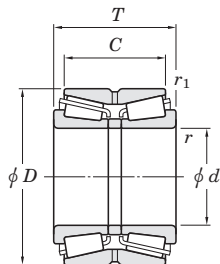
本書は、転がり軸受総合カタログの複列円すいころ軸受(TDOタイプ、TDIタイプ)の疲労限荷重値を正しい値に訂正するものです。

紙面の都合上、本来のページの「許容回転速度」欄を「呼び番号」欄に置き換えて掲載しております。

株式会社ジェイテクト

複列円すいころ軸受 外向き (TDO形)

d 25 ~ (60) mm

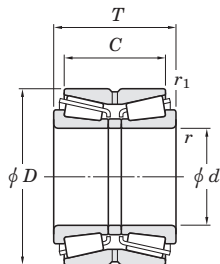


| 主 要 寸 法 (mm) | | | | | | 基本定格荷重 (kN) | | 疲労限荷重 (kN) | 呼 び 番 号 |
|-----------------|-----|-----|------|-------------|---------------|----------------|----------|---------------|-------------------|
| d | D | T | C | r (最小) | r_1 (最小) | C_r | C_{0r} | C_u | |
| 25 | 62 | 40 | 29.5 | 1.5 | 0.6 | 85.2 | 84.9 | 11.6 | 46T30305DJR/29.5 |
| 30 | 72 | 45 | 31.5 | 1.5 | 0.6 | 109 | 110 | 15.4 | 46T30306DJR/31.5 |
| 35 | 80 | 51 | 35.5 | 2 | 0.6 | 135 | 138 | 19.7 | 46T30307DJR/35.5 |
| 40 | 80 | 45 | 37.5 | 1.5 | 0.6 | 134 | 138 | 20.6 | 46T30208JR/37.5 |
| | 80 | 55 | 43.5 | 1.5 | 0.6 | 166 | 182 | 27.3 | 46T32208JR/43.5 |
| | 90 | 56 | 39.5 | 2 | 0.6 | 172 | 180 | 26.2 | 46T30308DJR/39.5 |
| | 90 | 56 | 45.5 | 2 | 0.6 | 194 | 202 | 31.0 | 46T30308JR/45.5 |
| 45 | 85 | 47 | 37.5 | 1.5 | 0.6 | 144 | 155 | 23.1 | 46T30209JR/37.5 |
| | 85 | 55 | 43.5 | 1.5 | 0.6 | 180 | 207 | 31.2 | 46T32209JR-1/43.5 |
| | 100 | 60 | 41.5 | 2 | 0.6 | 204 | 214 | 31.7 | 46T30309DJR/41.5 |
| | 100 | 60 | 49.5 | 2 | 0.6 | 242 | 256 | 39.8 | 46T30309JR/49.5 |
| 50 | 90 | 49 | 39.5 | 1.5 | 0.6 | 164 | 183 | 27.6 | 46T30210JR/39.5 |
| | 90 | 55 | 43.5 | 1.5 | 0.6 | 182 | 211 | 31.8 | 46T32210JR/43.5 |
| | 110 | 64 | 51.5 | 2 | 0.6 | 295 | 305 | 47.9 | 46T30310JR/51.5 |
| | 110 | 73 | 52.5 | 2 | 0.6 | 247 | 266 | 39.5 | 46T30310DJR/52.5 |
| | 110 | 90 | 71.5 | 2 | 0.6 | 378 | 440 | 68.4 | 46T32310JR/71.5 |
| 55 | 100 | 51 | 41.5 | 2 | 0.6 | 203 | 226 | 34.6 | 46T30211JR/41.5 |
| | 100 | 60 | 48.5 | 2 | 0.6 | 230 | 266 | 41.0 | 46T32211JR-1/48.5 |
| | 120 | 70 | 49 | 2 | 0.6 | 276 | 297 | 44.6 | 46T30311DJR/49 |
| | 120 | 70 | 57 | 2 | 0.6 | 320 | 341 | 53.9 | 46T30311JR/57 |
| | 120 | 97 | 76 | 2 | 0.6 | 429 | 500 | 78.2 | 46T32311JR/76 |
| 60 | 110 | 53 | 43.5 | 2 | 0.6 | 228 | 254 | 39.4 | 46T30212JR/43.5 |
| | 110 | 66 | 54.5 | 2 | 0.6 | 282 | 334 | 51.8 | 46T32212JR/54.5 |
| | 130 | 74 | 51 | 2.5 | 1 | 327 | 359 | 54.2 | 46T30312DJR/51 |
| | 130 | 74 | 59 | 2.5 | 1 | 372 | 401 | 63.8 | 46T30312JR/59 |

[備考] 上表に記載のない軸受 (インチ系列など) は、大形軸受カタログをご参照ください。

複列円すいころ軸受 外向き (TDO形)

d (60) ~ (90) mm

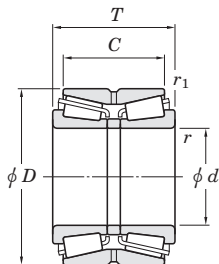


| 主 要 寸 法 (mm) | | | | | | 基本定格荷重 (kN) | | 疲労限荷重 (kN) | 呼 び 番 号 |
|-----------------|-----|-----|------|-------------|---------------|----------------|----------|---------------|------------------------|
| d | D | T | C | r (最小) | r_1 (最小) | C_r | C_{0r} | C_u | |
| 60 | 130 | 104 | 81 | 2.5 | 1 | 524 | 629 | 88.3 | 46T32312JR/81 |
| 65 | 120 | 56 | 46.5 | 2 | 0.6 | 275 | 311 | 48.7 | 46T30213JR/46.5 |
| | 120 | 73 | 61.5 | 2 | 0.6 | 337 | 406 | 63.3 | 46T32213JR/61.5 |
| | 140 | 79 | 53 | 2.5 | 1 | 377 | 417 | 62.8 | 46T30313DJR/53 |
| | 140 | 79 | 63 | 2.5 | 1 | 437 | 478 | 75.3 | 46T30313JR/63 |
| | 140 | 108 | 84 | 2.5 | 1 | 593 | 714 | 99.2 | 46T32313JR/84 |
| 70 | 125 | 59 | 48.5 | 2 | 0.6 | 296 | 346 | 54.2 | 46T30214JR/48.5 |
| | 125 | 74 | 61.5 | 2 | 0.6 | 363 | 450 | 70.4 | 46T32214JR/61.5 |
| | 150 | 83 | 57 | 2.5 | 1 | 421 | 470 | 69.8 | 46T30314DJR/57 |
| | 150 | 83 | 67 | 2.5 | 1 | 493 | 546 | 84.4 | 46T30314JR/67 |
| | 150 | 116 | 92 | 2.5 | 1 | 679 | 829 | 114 | 46T32314JR/92 |
| 75 | 115 | 30 | 26 | 1.5 | 0.6 | 89.9 | 105 | 14.6 | 46215 |
| | 115 | 38 | 30 | 1.5 | 0.6 | 153 | 207 | 31.2 | 46215A |
| | 130 | 62 | 51.5 | 2 | 0.6 | 305 | 362 | 56.4 | 46T30215JR/51.5 |
| | 130 | 74 | 61.5 | 2 | 0.6 | 373 | 469 | 72.7 | 46T32215JR/61.5 |
| | 160 | 87 | 69 | 2.5 | 1 | 557 | 621 | 89.8 | 46T30315JR/69 |
| | 160 | 125 | 99 | 2.5 | 1 | 779 | 963 | 129 | 46T32315JR/99 |
| 80 | 125 | 34 | 30 | 1.5 | 0.6 | 136 | 155 | 22.6 | 46216 |
| | 140 | 64 | 51.5 | 2 | 0.6 | 346 | 405 | 62.3 | 46T30216JR/51.5 |
| | 140 | 78 | 63.5 | 2 | 0.6 | 434 | 542 | 83.1 | 46T32216JR/63.5 |
| | 170 | 92 | 73 | 2.5 | 1 | 630 | 711 | 99.8 | 46T30316JR/73 |
| 85 | 150 | 70 | 57 | 2 | 0.6 | 391 | 463 | 70.3 | 46T30217JR/57 |
| | 150 | 86 | 69 | 2 | 0.6 | 498 | 630 | 95.1 | 46T32217JR/69 |
| | 180 | 98 | 77 | 3 | 1 | 679 | 768 | 106 | 46T30317JR/77 |
| | 180 | 137 | 108 | 3 | 1 | 941 | 1170 | 155 | 46T32317JR/108 |
| 90 | 140 | 37 | 33 | 2 | 0.6 | 171 | 199 | 28.8 | 46218 |

[備考] 上表に記載のない軸受 (インチ系列など) は、大形軸受カタログをご参照ください。

複列円すいころ軸受 外向き (TDO形)

d (90) ~ 110 mm

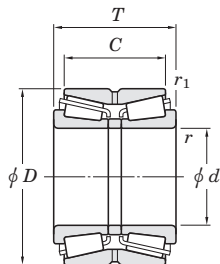


| 主要寸法 (mm) | | | | | | 基本定格荷重 (kN) | | 疲労限荷重 (kN) | 呼び番号 |
|--------------|-----|-----|-----|-------------|---------------|----------------|----------|---------------|-----------------------|
| d | D | T | C | r (最小) | r_1 (最小) | C_r | C_{0r} | C_u | |
| 90 | 140 | 46 | 37 | 2 | 0.6 | 196 | 266 | 39.3 | 46218A |
| | 160 | 74 | 61 | 2 | 0.6 | 438 | 522 | 78.1 | 46T30218JR/61 |
| | 160 | 94 | 77 | 2 | 0.6 | 565 | 724 | 107 | 46T32218JR/77 |
| | 190 | 102 | 81 | 3 | 1 | 741 | 841 | 114 | 46T30318JR/81 |
| | 190 | 144 | 115 | 3 | 1 | 989 | 1 230 | 157 | 46T32318JR/115 |
| 95 | 170 | 78 | 63 | 2.5 | 1 | 496 | 598 | 88.1 | 46T30219JR/63 |
| | 170 | 100 | 83 | 2.5 | 1 | 667 | 877 | 128 | 46T32219JR/83 |
| | 200 | 108 | 85 | 3 | 1 | 798 | 909 | 122 | 46T30319JR/85 |
| | 200 | 151 | 118 | 3 | 1 | 1 110 | 1 390 | 178 | 46T32319JR/118 |
| 100 | 150 | 46 | 37 | 2 | 0.6 | 226 | 293 | 42.6 | 46220A |
| | 165 | 52 | 46 | 2.5 | 0.6 | 249 | 305 | 44.1 | 46320 |
| | 165 | 65 | 52 | 2.5 | 0.6 | 333 | 443 | 64.7 | 46320A |
| | 180 | 83 | 67 | 2.5 | 1 | 554 | 676 | 98.2 | 46T30220JR/67 |
| | 180 | 107 | 87 | 2.5 | 1 | 745 | 990 | 128 | 46T32220JR/87 |
| | 215 | 112 | 87 | 3 | 1 | 906 | 1 040 | 136 | 46T30320JR/87 |
| | 215 | 162 | 127 | 3 | 1 | 1 240 | 1 570 | 194 | 46T32320JR/127 |
| 105 | 190 | 88 | 70 | 2.5 | 1 | 618 | 761 | 105 | 46T30221JR/70 |
| | 190 | 115 | 95 | 2.5 | 1 | 840 | 1 130 | 146 | 46T32221JR/95 |
| | 225 | 116 | 91 | 3 | 1 | 995 | 1 160 | 147 | 46T30321JR/91 |
| | 225 | 170 | 133 | 3 | 1 | 1 360 | 1 730 | 214 | 46T32321JR/133 |
| 110 | 170 | 45 | 40 | 2.5 | 0.6 | 219 | 304 | 42.5 | 46222 |
| | 180 | 56 | 50 | 2.5 | 0.6 | 308 | 388 | 55.3 | 46322 |
| | 180 | 70 | 56 | 2.5 | 0.6 | 391 | 533 | 76.1 | 46322A |
| | 200 | 92 | 74 | 2.5 | 1 | 695 | 868 | 116 | 46T30222JR/74 |
| | 200 | 121 | 101 | 2.5 | 1 | 938 | 1 280 | 161 | 46T32222JR/101 |
| | 240 | 118 | 93 | 3 | 1 | 1 030 | 1 180 | 150 | 46T30322JR/93 |
| | 240 | 181 | 142 | 3 | 1 | 1 480 | 1 890 | 230 | 46T32322JR/142 |

〔備考〕 上表に記載のない軸受（インチ系列など）は、大形軸受カタログをご参照ください。

複列円すいころ軸受 外向き (TDO形)

d 120 ~ (150) mm

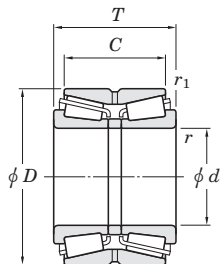


| 主要寸法 (mm) | | | | | | 基本定格荷重 (kN) | | 疲労限荷重 (kN) | 呼び番号 |
|--------------|------------|-----|-------|-------------|---------------|----------------|----------|---------------|-------------------------|
| d | D | T | C | r (最小) | r_1 (最小) | C_r | C_{0r} | C_u | |
| 120 | 180 | 46 | 41 | 2.5 | 0.6 | 232 | 317 | 43.6 | 46224 |
| | 180 | 58 | 46 | 2.5 | 0.6 | 309 | 460 | 64.4 | 46224A |
| | 200 | 62 | 55 | 2.5 | 0.6 | 367 | 470 | 65.7 | 46324 |
| | 200 | 78 | 62 | 2.5 | 0.6 | 486 | 672 | 93.9 | 46324A |
| | 200 | 100 | 84 | 2.5 | 0.6 | 670 | 1 010 | 125 | 46324AS |
| | 215 | 97 | 78 | 2.5 | 1 | 745 | 945 | 123 | 46T30224JR/78 |
| | 215 | 132 | 109 | 2.5 | 1 | 1 010 | 1 380 | 168 | 46T32224JR/109 |
| | 260 | 128 | 101 | 3 | 1 | 1 220 | 1 430 | 180 | 46T30324JR/101 |
| | 260 | 188 | 145 | 4 | 1.5 | 1 720 | 2 210 | 261 | 46T32324JR/145 |
| 130 | 200 | 52 | 46 | 2.5 | 0.6 | 299 | 425 | 57.8 | 46226 |
| | 200 | 65 | 52 | 2.5 | 0.6 | 400 | 618 | 85.0 | 46226A |
| | 210 | 64 | 57 | 2.5 | 0.6 | 404 | 535 | 73.6 | 46326 |
| | 210 | 80 | 64 | 2.5 | 0.6 | 513 | 723 | 99.3 | 46326A |
| | 230 | 98 | 78.5 | 3 | 1 | 809 | 1 020 | 131 | 46T30226JR/78.5 |
| | 230 | 145 | 117.5 | 3 | 1 | 1 190 | 1 660 | 200 | 46T32226JR/117.5 |
| | 280 | 137 | 107.5 | 4 | 1.5 | 1 410 | 1 670 | 203 | 46T30326JR/107.5 |
| | 140 | 210 | 53 | 47 | 2.5 | 0.6 | 299 | 404 | 54.5 |
| 210 | | 66 | 53 | 2.5 | 0.6 | 452 | 639 | 86.9 | 46228A |
| 225 | | 68 | 61 | 3 | 1 | 423 | 564 | 76.1 | 46328 |
| 225 | | 85 | 68 | 3 | 1 | 597 | 836 | 113 | 46328A |
| 250 | | 102 | 82.5 | 3 | 1 | 902 | 1 140 | 144 | 46T30228JR/82.5 |
| 250 | | 153 | 125.5 | 3 | 1 | 1 360 | 1 920 | 224 | 46T32228JR/125.5 |
| 300 | | 145 | 115.5 | 4 | 1.5 | 1 610 | 1 920 | 228 | 46T30328JR/115.5 |
| 150 | | 225 | 56 | 50 | 3 | 1 | 348 | 476 | 63.2 |
| | 225 | 70 | 56 | 3 | 1 | 472 | 703 | 94.1 | 46230A |
| | 250 | 80 | 71 | 3 | 1 | 587 | 786 | 98.4 | 46330 |
| | 250 | 100 | 80 | 3 | 1 | 748 | 1 070 | 132 | 46330A |
| | 270 | 109 | 87 | 3 | 1 | 1 040 | 1 330 | 162 | 46T30230JR/87 |

[備考] 上表に記載のない軸受 (インチ系列など) は、大形軸受カタログをご参照ください。

複列円すいころ軸受 外向き (TDO形)

d (150) ~ (200) mm

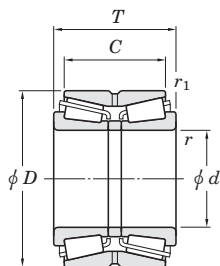


| d | 主要寸法 (mm) | | | | | 基本定格荷重 (kN) | | 疲労限荷重 (kN) | 呼び番号 |
|------------|--------------|-----|-----|-------------|---------------|----------------|----------|---------------|--|
| | D | T | C | r (最小) | r_1 (最小) | C_r | C_{0r} | C_u | |
| 150 | 270 | 164 | 130 | 3 | 1 | 1 510 | 2 130 | 245 | 46T32230JR/130 46T30330JR/120 |
| | 320 | 154 | 120 | 4 | 1.5 | 1 800 | 2 160 | 257 | |
| 160 | 240 | 60 | 53 | 3 | 1 | 405 | 565 | 74.0 | 46232 46232A 46332 46332A 46T30232JR/91 46T32232JR/144 |
| | 240 | 75 | 60 | 3 | 1 | 508 | 756 | 99.6 | |
| | 270 | 86 | 76 | 3 | 1 | 695 | 950 | 115 | |
| | 270 | 108 | 86 | 3 | 1 | 871 | 1 270 | 150 | |
| | 290 | 115 | 91 | 3 | 1 | 1 160 | 1 500 | 179 | |
| | 290 | 178 | 144 | 3 | 1 | 1 700 | 2 420 | 273 | |
| 170 | 260 | 67 | 60 | 3 | 1 | 480 | 642 | 83.4 | 46234 46234A 46334 46334A 46T30234JR/97 46T32234JR/152 |
| | 260 | 84 | 67 | 3 | 1 | 629 | 969 | 125 | |
| | 280 | 88 | 78 | 3 | 1 | 754 | 1 050 | 125 | |
| | 280 | 110 | 88 | 3 | 1 | 938 | 1 390 | 163 | |
| | 310 | 125 | 97 | 4 | 1.5 | 1 330 | 1 730 | 205 | |
| | 310 | 192 | 152 | 4 | 1.5 | 1 930 | 2 760 | 303 | |
| 180 | 280 | 74 | 66 | 3 | 1 | 582 | 801 | 98.9 | 46236 46236A 46336 46336A 46T30236JR/99 46T32236JR/152 |
| | 280 | 93 | 74 | 3 | 1 | 732 | 1 080 | 131 | |
| | 300 | 96 | 85 | 4 | 1.5 | 872 | 1 240 | 149 | |
| | 300 | 120 | 96 | 4 | 1.5 | 1 080 | 1 630 | 190 | |
| | 320 | 127 | 99 | 4 | 1.5 | 1 320 | 1 740 | 204 | |
| | 320 | 192 | 152 | 4 | 1.5 | 2 060 | 3 030 | 328 | |
| 190 | 290 | 75 | 67 | 3 | 1 | 610 | 866 | 106 | 46238 46238A 46338 46338A 46T30238JR/105 46T32238JR/160 |
| | 290 | 94 | 75 | 3 | 1 | 793 | 1 170 | 140 | |
| | 320 | 104 | 92 | 4 | 1.5 | 1 020 | 1 450 | 168 | |
| | 320 | 130 | 104 | 4 | 1.5 | 1 230 | 1 860 | 212 | |
| | 340 | 133 | 105 | 4 | 1.5 | 1 560 | 2 060 | 235 | |
| | 340 | 204 | 160 | 4 | 1.5 | 2 340 | 3 480 | 373 | |
| 200 | 310 | 82 | 73 | 3 | 1 | 716 | 1 040 | 123 | 46240 |

〔備考〕 上表に記載のない軸受（インチ系列など）は、大形軸受カタログをご参照ください。

複列円すいころ軸受 外向き (TDO形)

d (200) ~ (300) mm

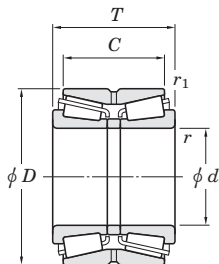


| d | 主要寸法 (mm) | | | | | 基本定格荷重 (kN) | | 疲労限荷重 (kN) | 呼び番号 |
|------------|--------------|-----|-----|-------------|---------------|----------------|----------|---------------|-----------------------|
| | D | T | C | r (最小) | r_1 (最小) | C_r | C_{0r} | C_u | |
| 200 | 310 | 103 | 82 | 3 | 1 | 893 | 1 380 | 160 | 46240A |
| | 340 | 112 | 100 | 4 | 1.5 | 1 100 | 1 580 | 180 | 46340 |
| | 340 | 140 | 112 | 4 | 1.5 | 1 350 | 2 040 | 226 | 46340A |
| | 360 | 142 | 110 | 4 | 1.5 | 1 700 | 2 240 | 252 | 46T30240JR/110 |
| | 360 | 218 | 174 | 4 | 1.5 | 2 660 | 3 760 | 399 | 46T32240JR/174 |
| 220 | 340 | 90 | 80 | 4 | 1.5 | 849 | 1 240 | 142 | 46244 |
| | 340 | 113 | 90 | 4 | 1.5 | 1 040 | 1 620 | 183 | 46244A |
| | 370 | 120 | 107 | 5 | 1.5 | 1 260 | 1 810 | 202 | 46344 |
| | 370 | 150 | 120 | 5 | 1.5 | 1 600 | 2 470 | 272 | 46344A |
| | 400 | 150 | 114 | 4 | 1.5 | 2 170 | 2 880 | 320 | 46T30244JR/114 |
| 240 | 360 | 92 | 82 | 4 | 1.5 | 962 | 1 430 | 159 | 46248 |
| | 360 | 115 | 92 | 4 | 1.5 | 1 240 | 1 980 | 216 | 46248A |
| | 400 | 128 | 114 | 5 | 1.5 | 1 490 | 2 180 | 241 | 46348 |
| | 400 | 160 | 128 | 5 | 1.5 | 1 940 | 3 060 | 325 | 46348A |
| 260 | 400 | 104 | 92 | 5 | 1.5 | 1 170 | 1 830 | 200 | 46252 |
| | 400 | 130 | 104 | 5 | 1.5 | 1 520 | 2 480 | 265 | 46252A |
| | 440 | 144 | 128 | 5 | 1.5 | 1 900 | 2 880 | 302 | 46352 |
| | 440 | 180 | 144 | 5 | 1.5 | 2 430 | 3 960 | 408 | 46352A |
| 280 | 420 | 106 | 94 | 5 | 1.5 | 1 260 | 1 970 | 213 | 46256 |
| | 420 | 133 | 106 | 5 | 1.5 | 1 570 | 2 610 | 277 | 46256A |
| | 460 | 146 | 130 | 6 | 2 | 1 950 | 2 930 | 308 | 46356 |
| | 460 | 183 | 146 | 6 | 2 | 2 470 | 3 940 | 407 | 46356A |
| 300 | 460 | 118 | 105 | 5 | 1.5 | 1 630 | 2 400 | 254 | 46260 |
| | 460 | 148 | 118 | 5 | 1.5 | 2 050 | 3 230 | 331 | 46260A |
| | 500 | 160 | 142 | 6 | 2 | 2 320 | 3 540 | 366 | 46360 |
| | 500 | 200 | 160 | 6 | 2 | 2 860 | 4 630 | 463 | 46360A |

〔備考〕 上表に記載のない軸受（インチ系列など）は、大形軸受カタログをご参照ください。

複列円すいころ軸受 外向き (TDO形)

d (300) ~ 420 mm

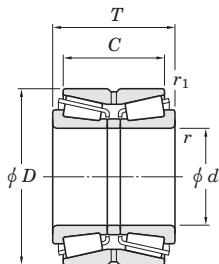


| 主 要 寸 法 (mm) | | | | | | 基本定格荷重 (kN) | | 疲労限荷重 (kN) | 呼 び 番 号 |
|-----------------|-----|-----|-----|-------------|---------------|----------------|----------|---------------|---------------|
| d | D | T | C | r (最小) | r_1 (最小) | C_r | C_{0r} | C_u | |
| 300 | 500 | 200 | 160 | 6 | 1.5 | 3 140 | 4 650 | 474 | 46360D |
| 320 | 480 | 121 | 108 | 5 | 1.5 | 1 800 | 2 700 | 283 | 46264 |
| | 480 | 151 | 121 | 5 | 1.5 | 2 060 | 3 410 | 342 | 46264A |
| | 540 | 176 | 157 | 6 | 2 | 2 880 | 4 570 | 457 | 46364 |
| | 540 | 220 | 176 | 6 | 2 | 3 280 | 5 390 | 528 | 46364A |
| 340 | 520 | 133 | 118 | 6 | 2 | 1 940 | 3 070 | 314 | 46268 |
| | 520 | 165 | 133 | 6 | 2 | 2 420 | 4 060 | 406 | 46268A |
| | 580 | 190 | 169 | 6 | 2 | 2 980 | 4 620 | 454 | 46368 |
| | 580 | 238 | 190 | 6 | 2 | 3 820 | 6 340 | 606 | 46368A |
| 360 | 540 | 134 | 120 | 6 | 2 | 2 070 | 3 290 | 332 | 46272 |
| | 540 | 169 | 134 | 6 | 2 | 2 530 | 4 230 | 419 | 46272A |
| | 600 | 192 | 171 | 6 | 2 | 3 600 | 4 880 | 473 | 46372 |
| | 600 | 240 | 192 | 6 | 2 | 4 590 | 7 230 | 689 | 46372A |
| 380 | 560 | 135 | 122 | 6 | 2 | 2 190 | 3 560 | 355 | 46276 |
| | 560 | 171 | 135 | 6 | 2 | 2 810 | 4 670 | 456 | 46276A |
| | 620 | 194 | 173 | 6 | 2 | 3 380 | 5 220 | 500 | 46376 |
| | 620 | 243 | 194 | 6 | 2 | 4 390 | 7 360 | 683 | 46376A |
| 400 | 600 | 148 | 132 | 6 | 2 | 2 350 | 3 720 | 366 | 46280 |
| | 600 | 185 | 148 | 6 | 2 | 3 030 | 5 150 | 491 | 46280A |
| | 650 | 200 | 178 | 6 | 3 | 3 740 | 5 920 | 565 | 46380 |
| | 650 | 250 | 200 | 6 | 3 | 5 110 | 8 850 | 811 | 46380A |
| 420 | 620 | 150 | 134 | 6 | 2 | 2 520 | 4 130 | 399 | 46284 |
| | 620 | 188 | 150 | 6 | 2 | 3 390 | 5 660 | 534 | 46284A |
| | 700 | 224 | 200 | 6 | 3 | 4 650 | 6 880 | 647 | 46384 |
| | 700 | 280 | 224 | 6 | 3 | 6 040 | 9 620 | 861 | 46384A |

[備考] 上表に記載のない軸受 (インチ系列など) は、大形軸受カタログをご参照ください。

複列円すいころ軸受 外向き (TDO形)

d 440 ~ 500 mm

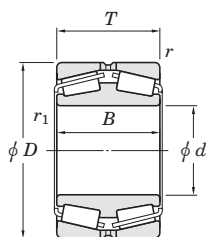


| d | 主要寸法 (mm) | | | | | 基本定格荷重 (kN) | | 疲労限荷重 (kN) | 呼び番号 |
|------------|--------------|-----|-----|-------------|---------------|----------------|----------|---------------|-----------------|
| | D | T | C | r (最小) | r_1 (最小) | C_r | C_{0r} | C_u | |
| 440 | 650 | 157 | 140 | 6 | 3 | 2 840 | 4 430 | 423 | 46288 |
| | 650 | 196 | 157 | 6 | 3 | 3 770 | 6 370 | 600 | 46288A |
| | 720 | 226 | 201 | 6 | 3 | 4 950 | 8 110 | 744 | 46388 |
| | 720 | 283 | 226 | 6 | 3 | 6 210 | 10 100 | 893 | 46388A |
| 460 | 680 | 163 | 145 | 6 | 3 | 3 130 | 5 340 | 507 | 46292 |
| | 680 | 204 | 163 | 6 | 3 | 4 040 | 6 850 | 635 | 46292A |
| | 760 | 240 | 214 | 7.5 | 4 | 5 460 | 9 000 | 817 | 46392 |
| | 760 | 300 | 240 | 7.5 | 4 | 7 130 | 11 600 | 1 010 | 46392A |
| 480 | 700 | 165 | 147 | 6 | 3 | 3 180 | 5 300 | 494 | 46296 |
| | 700 | 206 | 165 | 6 | 3 | 4 040 | 7 230 | 666 | 46296A |
| | 790 | 248 | 221 | 7.5 | 4 | 5 820 | 8 920 | 810 | 46396 |
| | 790 | 310 | 248 | 7.5 | 4 | 7 530 | 12 400 | 1 060 | 46396A |
| 500 | 720 | 167 | 149 | 6 | 3 | 3 230 | 5 690 | 529 | 462/500 |
| | 720 | 209 | 167 | 6 | 3 | 4 390 | 7 850 | 712 | 462/500A |
| | 830 | 264 | 235 | 7.5 | 4 | 6 570 | 10 900 | 955 | 463/500 |
| | 830 | 330 | 264 | 7.5 | 4 | 8 510 | 14 000 | 1 170 | 463/500A |

〔備考〕 上表に記載のない軸受（インチ系列など）は、大形軸受カタログをご参照ください。

複列円すいころ軸受 内向き (TDI形)

d 100 ~ (220) mm

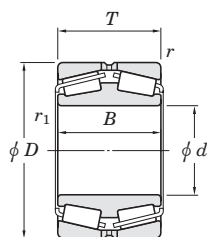


| 主 要 寸 法 (mm) | | | | | | 基本定格荷重 (kN) | | 疲労限荷重 (kN) | 呼 び 番 号 |
|-----------------|-----|-----|-----|-------------|---------------|----------------|----------|---------------|--------------|
| d | D | B | T | r (最小) | r_1 (最小) | C_r | C_{0r} | C_u | |
| 100 | 165 | 52 | 52 | 2 | 2.5 | 298 | 384 | 55.9 | 45320 |
| 110 | 180 | 56 | 56 | 2 | 2.5 | 378 | 505 | 72.2 | 45322 |
| 120 | 180 | 46 | 46 | 2 | 2.5 | 286 | 424 | 59.4 | 45224 |
| | 200 | 62 | 62 | 2 | 2.5 | 444 | 598 | 83.4 | 45324 |
| 130 | 200 | 52 | 52 | 2 | 2.5 | 376 | 548 | 75.6 | 45226 |
| | 210 | 64 | 64 | 2 | 2.5 | 476 | 657 | 90.3 | 45326 |
| 140 | 210 | 53 | 53 | 2 | 2.5 | 390 | 564 | 76.9 | 45228 |
| | 225 | 68 | 68 | 2.5 | 3 | 611 | 807 | 103 | 45328 |
| 150 | 225 | 56 | 56 | 2.5 | 3 | 445 | 686 | 91.6 | 45230 |
| | 250 | 80 | 80 | 2.5 | 3 | 684 | 955 | 120 | 45330 |
| 160 | 240 | 60 | 60 | 2.5 | 3 | 488 | 705 | 93.1 | 45232 |
| | 270 | 86 | 86 | 2.5 | 3 | 832 | 1 100 | 146 | 45332 |
| 170 | 260 | 67 | 67 | 2.5 | 3 | 654 | 956 | 124 | 45234 |
| | 280 | 88 | 88 | 2.5 | 3 | 834 | 1 210 | 145 | 45334 |
| 180 | 280 | 74 | 74 | 2.5 | 3 | 722 | 1 050 | 125 | 45236 |
| | 300 | 96 | 96 | 3 | 4 | 992 | 1 370 | 162 | 45336 |
| 190 | 290 | 75 | 75 | 2.5 | 3 | 751 | 1 130 | 133 | 45238 |
| | 320 | 104 | 104 | 3 | 4 | 1 130 | 1 590 | 183 | 45338 |
| 200 | 310 | 82 | 82 | 2.5 | 3 | 913 | 1 410 | 166 | 45240 |
| | 340 | 112 | 112 | 3 | 4 | 1 250 | 1 840 | 208 | 45340 |
| 220 | 340 | 90 | 90 | 3 | 4 | 933 | 1 460 | 167 | 45244 |

〔備考〕 上表に記載のない軸受（インチ系列など）は、大形軸受カタログをご参照ください。

複列円すいころ軸受 内向き (TDI形)

d (220) ~ (420) mm

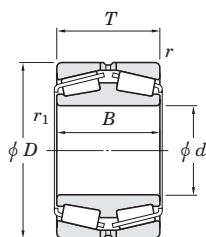


| 主 要 寸 法 (mm) | | | | | | 基本定格荷重 (kN) | | 疲労限荷重 (kN) | 呼 び 番 号 | |
|-----------------|-----|-----|-----|-------------|---------------|----------------|----------|---------------|---------------|--|
| d | D | B | T | r (最小) | r_1 (最小) | C_r | C_{0r} | C_u | | |
| 220 | 370 | 120 | 120 | 4 | 5 | 1 400 | 2 060 | 226 | 45344 | |
| 230 | 350 | 90 | 90 | 3 | 4 | 991 | 1 560 | 177 | 45246 | |
| 240 | 360 | 92 | 92 | 3 | 4 | 1 150 | 1 790 | 200 | 45248 | |
| | 400 | 128 | 128 | 4 | 5 | 1 650 | 2 470 | 265 | 45348 | |
| 260 | 400 | 104 | 104 | 4 | 5 | 1 320 | 2 120 | 227 | 45252 | |
| | 440 | 144 | 144 | 4 | 5 | 2 180 | 3 440 | 357 | 45352 | |
| 280 | 420 | 106 | 106 | 4 | 5 | 1 490 | 2 470 | 265 | 45256 | |
| | 460 | 146 | 146 | 5 | 6 | 2 310 | 3 320 | 351 | 45356 | |
| 300 | 460 | 118 | 118 | 4 | 5 | 1 870 | 3 150 | 325 | 45260 | |
| | 500 | 160 | 160 | 5 | 6 | 2 670 | 4 240 | 431 | 45360 | |
| 320 | 480 | 121 | 121 | 4 | 5 | 1 830 | 3 180 | 322 | 45264 | |
| | 540 | 176 | 176 | 5 | 6 | 3 380 | 5 280 | 528 | 45364R | |
| 340 | 520 | 133 | 133 | 5 | 6 | 2 380 | 3 850 | 372 | 45268 | |
| | 580 | 190 | 190 | 5 | 6 | 3 790 | 5 470 | 537 | 45368 | |
| 360 | 540 | 134 | 134 | 5 | 6 | 2 370 | 3 910 | 393 | 45272 | |
| | 600 | 192 | 192 | 5 | 6 | 4 230 | 6 750 | 648 | 45372 | |
| 380 | 560 | 135 | 135 | 5 | 6 | 2 300 | 3 790 | 371 | 45276 | |
| | 620 | 194 | 194 | 5 | 6 | 3 860 | 6 360 | 606 | 45376 | |
| 400 | 600 | 148 | 148 | 5 | 6 | 3 020 | 4 960 | 478 | 45280 | |
| | 650 | 200 | 200 | 6 | 6 | 4 840 | 7 810 | 735 | 45380 | |
| 420 | 620 | 150 | 150 | 5 | 6 | 3 010 | 5 200 | 496 | 45284 | |

[備考] 上表に記載のない軸受 (インチ系列など) は、大形軸受カタログをご参照ください。

複列円すいころ軸受 内向き (TDI形)

d (420) ~ 500 mm



| d | 主要寸法 (mm) | | | | | 基本定格荷重 (kN) | | 疲労限荷重 (kN) | 呼び番号 |
|------------|--------------|-----|-----|-------------|---------------|----------------|----------|---------------|----------------------------------|
| | D | B | T | r (最小) | r_1 (最小) | C_r | C_{0r} | C_u | |
| 420 | 700 | 224 | 224 | 6 | 6 | 5 430 | 8 380 | 777 | 45384 |
| | | | | | | | | | |
| 440 | 650 | 157 | 157 | 6 | 6 | 3 190 | 5 500 | 512 | 45288 45388 |
| | 720 | 226 | 226 | 6 | 6 | 5 750 | 9 130 | 834 | |
| 460 | 680 | 163 | 163 | 6 | 6 | 3 480 | 5 660 | 531 | 45292 45392 |
| | 760 | 240 | 240 | 7.5 | 7.5 | 6 570 | 10 400 | 927 | |
| 480 | 700 | 165 | 165 | 6 | 6 | 3 830 | 6 710 | 614 | 45296 |
| 500 | 720 | 167 | 167 | 6 | 6 | 4 300 | 7 350 | 681 | 452/500 453/500 |
| | 830 | 264 | 264 | 7.5 | 7.5 | 7 970 | 12 300 | 1 110 | |

[備考] 上表に記載のない軸受（インチ系列など）は、大形軸受カタログをご参照ください。